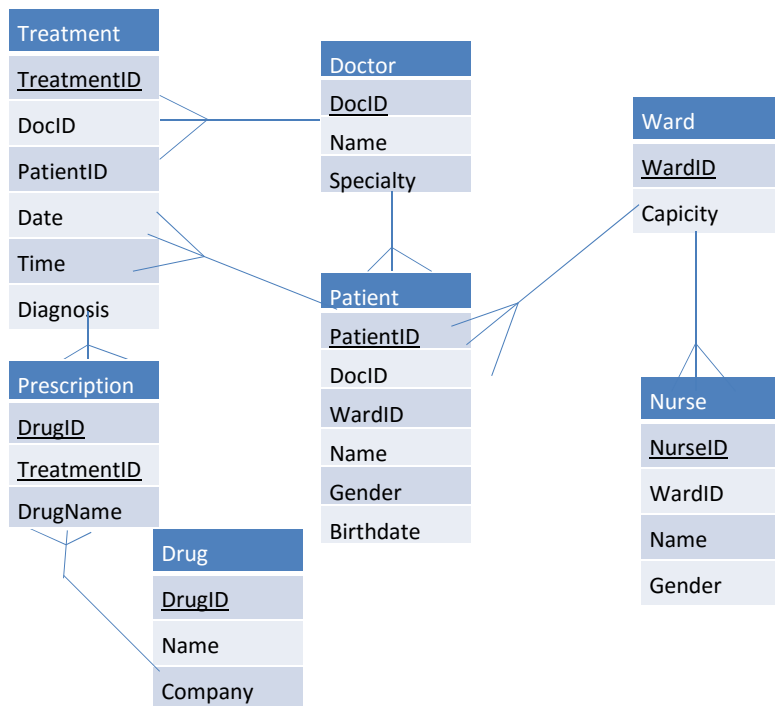


Objectives:

1. Create tables in a database.
2. Represent the relationships between tables.
3. Inserting data into the database.
4. Create forms and reports.

Tasks:

In this assignment, you are supposed to translate the conceptual schema you created in the last lab into a database. Below is the conceptual schema.



Note that each table in the conceptual schema will be translated into a table in your database.

1. Open MS Access and create an empty database
2. Your database already contains one table named Table1. To rename it, save the table first and then rename it.
3. To create a new table, go to create tab and click on table. Again, you have to save the table in order to rename it.
4. To add the attributes for each table, you have to open the table in the Design View. From there you can add the attributes for each table.
Note that in some tables we have attributes from other tables. To add those attributes you must use the Lookup Column feature. When including attributes using the Lookup Column, the relationships are created automatically.
5. When you are done with all tables and all attributes, go to Database Tools tab and click on Relationships. If nothing is shown, just right click in the empty space and select show all. This will show you the relationships between the tables you created.

6. Show your work to the TA. If everything is Ok, move to the next step.
7. To insert data into a table in your database, you have to view the table in the Datasheet View.
8. Fill each table with the data provided below:

Note: Since we have relationships between tables, you can enter your data from either table.

a. Doctor Table

DoctorID	DoctorName	Specialty
1	Steve	Surgeon
2	Mark	Neurology
3	Alice	Cardiology
4	Gabi	Dermatology
*	(New)	

b. Patient Table

PatientID	DoctorID	WardID	PatientName	Gender	Birthdate
2	4	1	Mark	Male	7/16/2007
3	2	3	Xena	Female	3/20/2003
*	(New)				

c. Ward Table

WardID	Capacity	NurseID	NurseName	Gender	Add New Field
1	10				
			Vicki	Female	
*			(New)		
2	13				
			Jamal	Male	
*			(New)		
3	15				
			Lisa	Female	
			John	Male	
*			(New)		
*			(New)		

d. Treatment Table

Patient		Treatment				
	TreatmentID	DoctorID	PatientID	TreatmentDate	TreatmentTime	Diagnosis
+	1	2	2	10/2/2011		Epilapsy
+	2	4	3	9/19/2011		Second Degree Burns
*	(New)					

e. Drug Table

Drug			
	DrugID	DrugName	DrugCompany
+	1	Abarelix	Bayer
+	2	Dimetane	Pfizer
+	3	Naloxone	Roche
+	4	Soltamox	Novartis
*	(New)		

f. Prescription Table

Prescription		
	ID	DrugName
	1	1 Dimetane
	2	2 Naloxone
*	(New)	

9. Show your work to the TA and confirm that everything is correct.
10. Create a form using the Form wizard on the Doctor table and try to enter new data or edit existing data
11. Create a report using the Report Wizard on the Patient table. Choose any style you like.